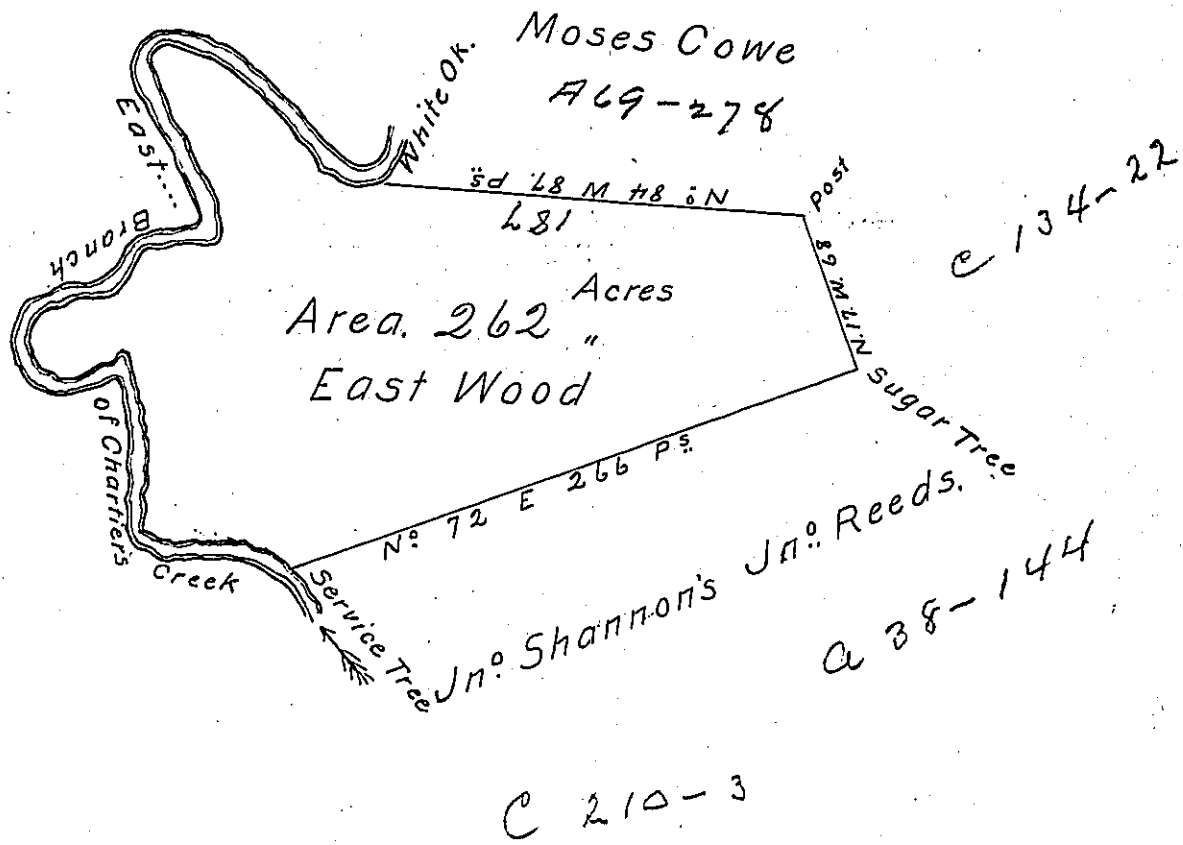


P-4-493
 (3-9)

Courses along the Creek

- West 22 Perches
- N° 42 W 22 D°
 - N° 46 W 49 D°
 - N° 79 W 26 D°
 - S° 20 E 68 D°
 - S° 2 E 13 D°
 - S° 77 W 28 D°
 - S° 38 W 22 D°
 - S° 8° W 28 D°
 - S° 40 W 20 D°
 - S° 29 E 19 D°
 - N° 68 E 32 D°
 - S° 3° E 81 D°
 - S° 80 E 60 D°
 - S° 51° E 9 D°
- 489



The above is a Draught of a Tract of Land lying upon Chartiers Creek Washington County containing 262 Acres Survey'd for Joseph Beeler by Virtue of the Entry of his Certificate Granted to him by the Virginia Commissioners being upon the Record of the Surveyors of York County the Certificate itself being lost. Surveyed July 15th 1785.

Presley Newell } W.P.
 Matthew Ritchie }

John Lukens Esq. }
 Surveyor General }

IN TESTIMONY that the above is a copy of the original remaining on file in the Department of Internal Affairs of Pennsylvania, made conformably to an Act of Assembly approved the 16th day of February, 1833, I have hereunto set my Hand and caused the Seal of said Department to be affixed at Harrisburg, this seventh day of December 1903,

Francis D. Brown
 Secretary of Internal Affairs.